

STR Authentication Report For Cell Line

1. Cell Name: L5178Y TK

2. Test Method: DNA was extracted using the genome extraction kit (Axygen), amplified using a 21- STR amplification protocol, the STR loci and gender gene Amelogenin were detected on the ABI 3730XL Genetic Analyzer.

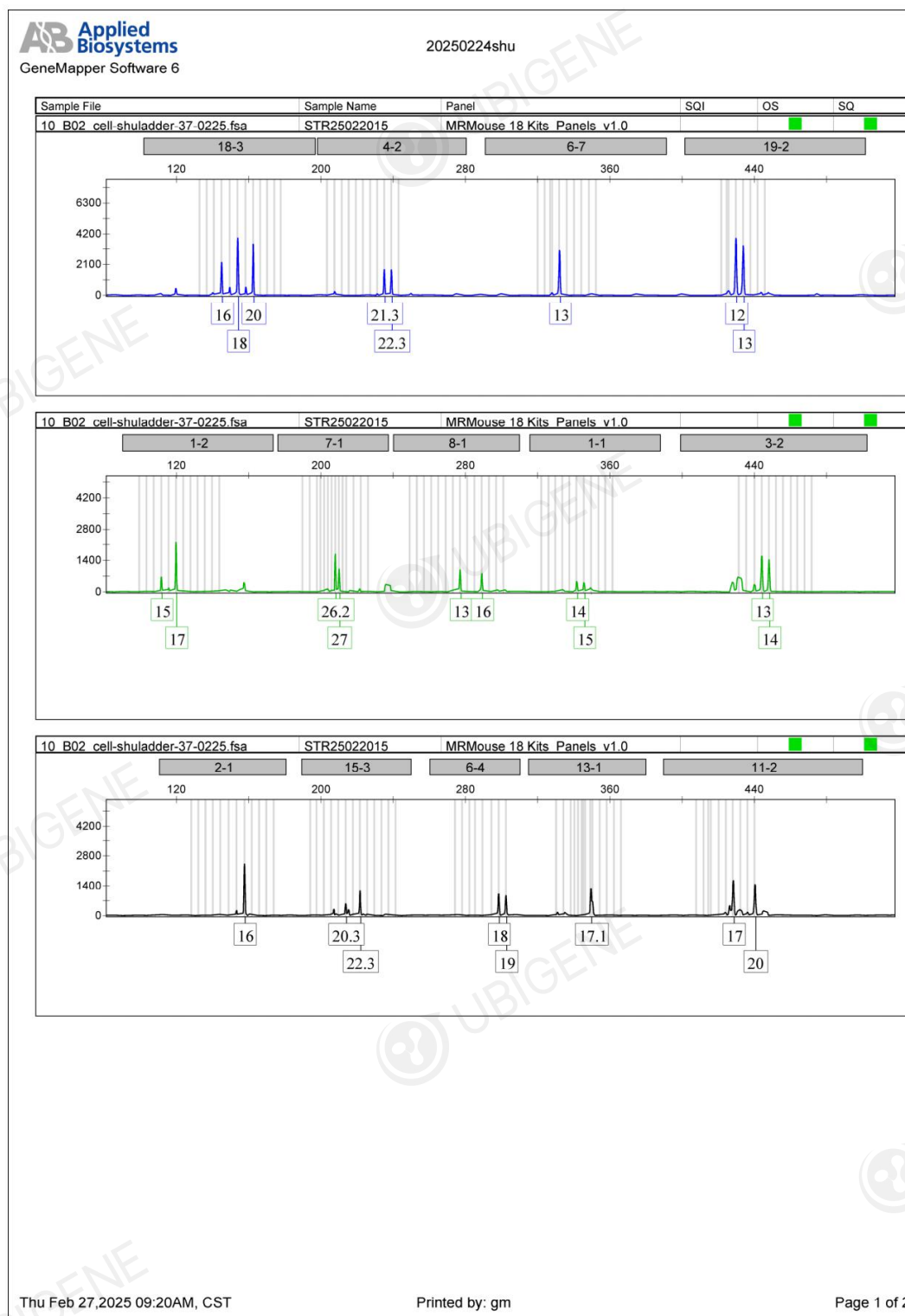
3. Sample gene genotype analysis result:

Genotype analysis results of STR and Amelogenin loci in cells							
STR Loci	STR profile for Sample cell				STR profile for Cell Bank cell		
	Cell name: STR25022015				Cell name: L5178YTK+/- clone(3.7.2c)		
	Allele1	Allele2	Allele3	Allele4	Allele1	Allele2	Allele3
18-3	16.0	18.0	20.0		16.0	18.0	20.0
4-2	21.3	22.3			21.3	22.3	
6-7	13.0				13.0		
19-2	12.0	13.0			12.0	13.0	
1-2	15.0	17.0			17.0		
7-1	26.2	27.0			26.2		
8-1	13.0	16.0			13.0	16.0	
1-1	14.0	15.0			14.0	15.0	
3-2	13.0	14.0			13.0	14.0	
2-1	16.0				16.0		
15-3	20.3	22.3			20.3	22.3	
6-4	18.0	19.0			18.0	19.0	
13-1	17.1				17.1	17.2	
11-2	17.0	20.0			17.0	20.0	

17-2	16.0	18.0			16.0	18.0	
12-1	17.0	18.0			17.0	18.0	
5-5	13.0	14.0			13.0	14.0	
X-1	26.0				26.0		
TH01							
D5S818							

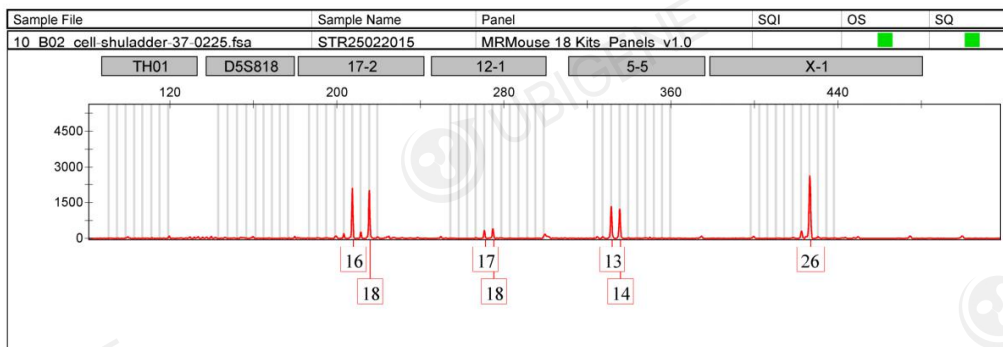
4. Conclusion: The STR results of **L5178Y TK** cells are consistent with the genotypes of **L5178YTK+/-clone(3.7.2c)** cell lines in **EXPASY** database, the cell ID corresponded to **1101MOU-PUMC000816** , and the STR results **basically matched**. In the test, **Multi allele was found** in this cell line.

5. Attached Image



AB Applied Biosystems
GeneMapper Software 6

20250224shu



Thu Feb 27, 2025 09:20AM, CST

Printed by: gm

Page 2 of 2